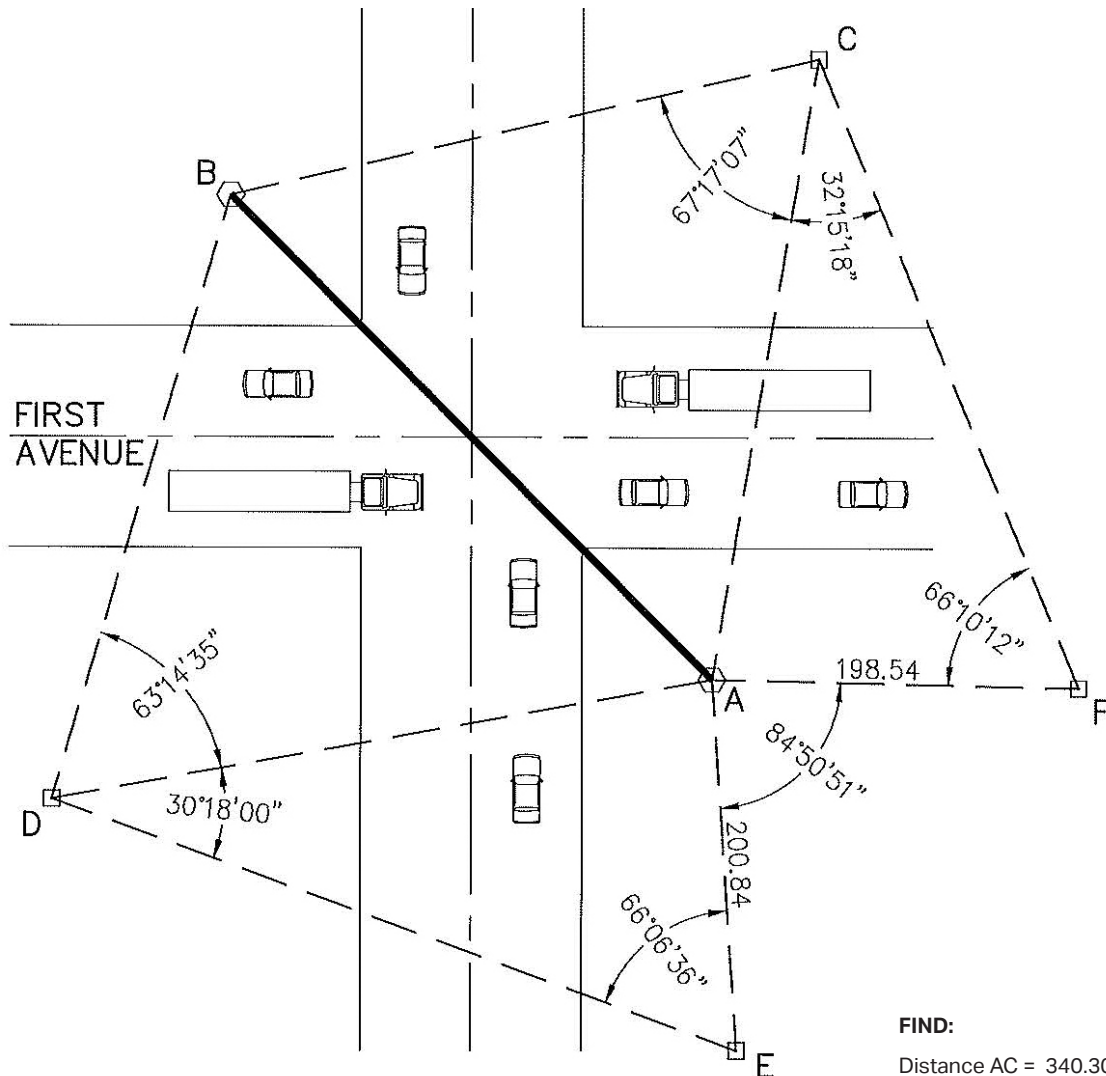




PROBLEM CORNER

PROBLEM:

A local traffic engineering department has determined the need for an overhead signal light system at a very busy intersection. The support poles need to be placed at points A and B. Due to heavy traffic volume, the field measurements by the survey crew were limited to the following sketch.



FIND:

Distance AC = 340.30

Distance AD = 363.97

Distance DC = 577.02

Distance BC = 327.27

Distance AB = 370.00

Required Answered Format

Distances: Nearest Hundredth